

The top section of the advertisement features three images. The left image shows a close-up of a red metal surface with a black rubber liner. The middle image shows a circular opening in a concrete structure with a red rubber liner. The right image shows a vertical concrete structure with a red rubber liner. The text 'CONCRETE WEARS. DUREX PROTECTS.' is overlaid in large, bold, white letters with a black drop shadow.

## CONCRETE WEARS. DUREX PROTECTS.

### DESIGNED AND BUILT TO MATCH YOUR UNIQUE APPLICATION

Durex offers a number of wear-resistant urethane, urethane-ceramic, and rubber-ceramic liner solutions that provide long-term protection in concrete plants and concrete trucks. We offer standard liners, or we can design and build you a custom liner solution. Our liners will combat impact, abrasion, noise, and sticking. Based on your needs, our liners can be installed by welding, bolting, or with high-strength magnets. We have developed our standard liners to fit plants and trucks from most major manufacturers. Custom liners can be designed to suit any application.

Durex urethane liners provide superior protection in the most severe conditions. Urethane-ceramic and rubber-ceramic liners are ideal for the harshest of wear areas, including turnheads, flop gates, impact areas, and belt transition areas. One application that has proven optimal for rubber-ceramic is on blade tip liners within the mixer.

### WHY URETHANE, URETHANE-CERAMIC, OR RUBBER-CERAMIC?

Urethane, urethane-ceramic, and rubber-ceramic liners are long-lasting, and urethane is lighter than steel, allowing for easier handling and installation. Any necessary trimming of urethane can be performed in place with a sharp knife or reciprocating saw. Steel does not allow cutting in enclosed areas, requiring removal of the liners for adjustment.

### WHY DUREX PRODUCTS?

Durex liners deliver outstanding efficiency and wear life in even the harshest conditions. Dedicated attention to our customers' and dealers' needs comes from years of field experience. We supply the best materials for your application — saving you money in maintenance and downtime.

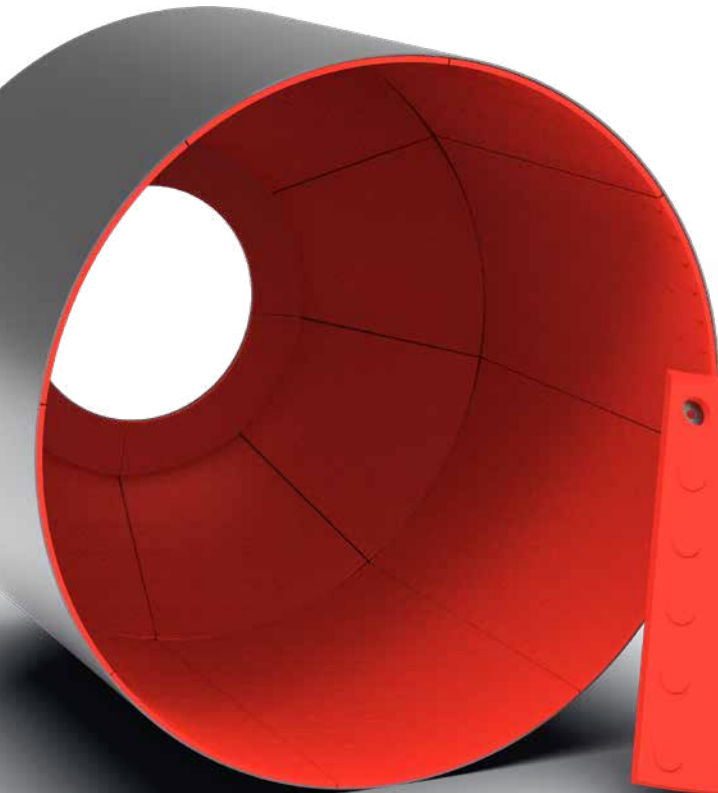
# COST-EFFECTIVE, WEAR-RESISTANT LINERS FOR CONCRETE APPLICATIONS

## FOR PLANTS

Liners and wear parts are designed to fit common wear areas in most plant brands — including central mix drum liners and blade liners, turnhead liners, cement pipe liners, hopper and bin liners, scale liners, and dump chute liners.

## FOR TRUCKS

For concrete trucks, we offer charge hopper liners designed to fit most makes and models. We also build urethane discharge bibs and drum wipers that greatly outperform the typical rubber products used in the industry today.



12 yd. Mixer

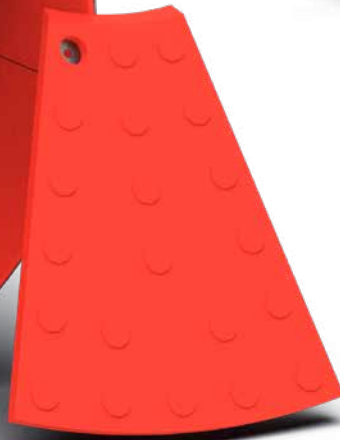


Drum Wiper

Truck Discharge Skirting

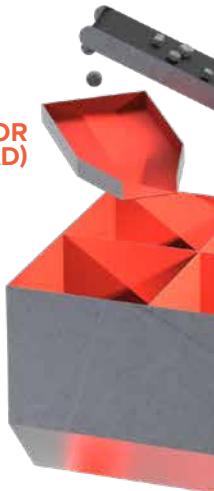


Charge Hopper Liner



Nose Cone Concrete Liner

## ROTARY DISTRIBUTOR (TURNHEAD)



BLADES

DUMP CONE

CENTRAL MIX DRUM

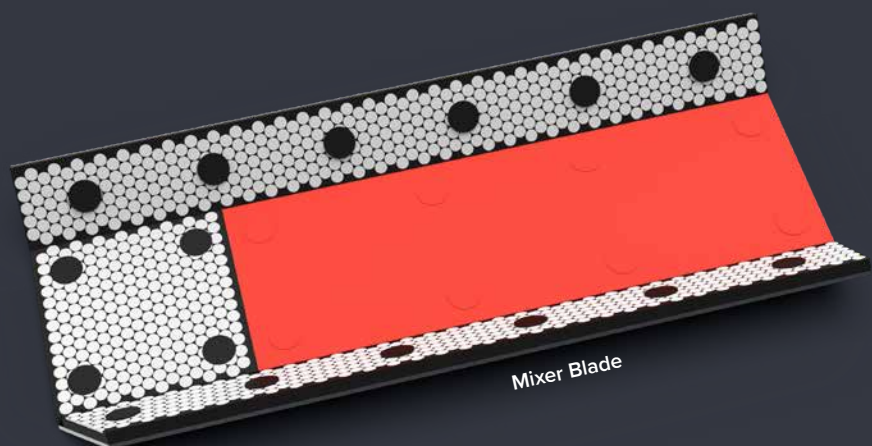
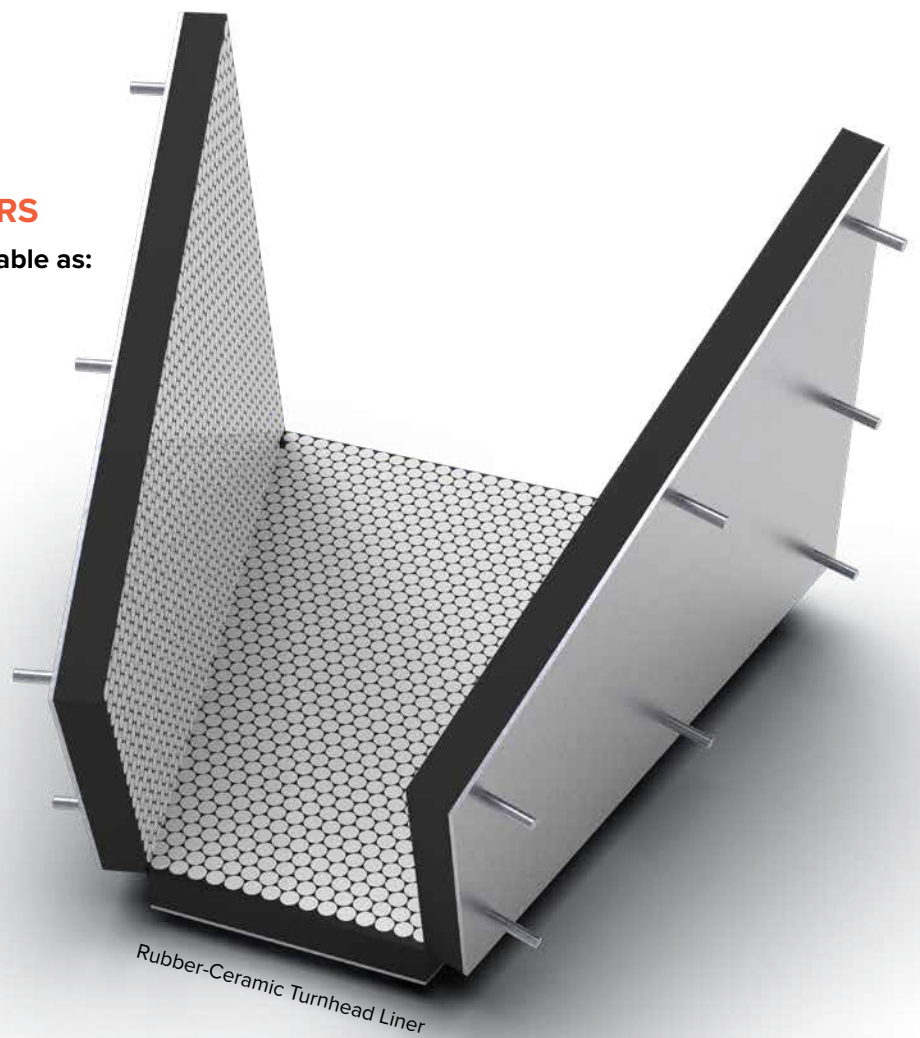
## CONCRETE BATCH PLANT LINERS

Our made-to-order liner material is available as:

- No backing for bolting into place
- Plug-weld system
- Expanded metal
- Magnetic wear liners

### Plain Urethane and Plug-Weldable Urethane Sheets

- Common urethane sheets in plain and weldable sizes:
  - 4-ft x 8-ft
  - 4-ft x 10-ft
  - 5-ft x 10-ft



## RECOMMENDED LINER MATERIAL & THICKNESS

Material	Liner Type	Typical Overall Thickness
Durex Unique Urethane Formulas	Rotary Distributor (turnhead)	1" to 1-1/2"
	Aggregate Bin	1/2"
	Sand Bin	1/2"
Urethane-Ceramic	Weigh Batcher	1/2" to 3/4"
	Drum	1"
Rubber-Ceramic	Blade	1"
	Dump Cone	3/4"
	Loading Hopper	3/4"
	Transfer Chute	1"



**Magnetic and Weldable Mixer Liner Set:** Reduces installation and eventual removal of the liners. Also, concrete flows smoothly over liners with fewer plug-weld indentations, causing less turbulence and, thus, less wear.



### ASK ABOUT OUR SCREEN MEDIA LINES

- **Woven and Slotted Wire Screen Media:** Square, Rectangular, Long-Slot Triple Shoot, Mesh
- **Self-Cleaning Wire Screen Media:** Livewire®, Accuslot®, Vibraspan®
- **Modular Urethane and Rubber Screen Media:** Classic, 2000, Knock-in-Bar, P-Pin, P-Pin Maxi, P-Snap, and P-Snap Maxi
- **Side-Tensioned Screen Media:** Armor®, Cable-Reinforced, Urethane and Rubber, Perforated Plate
- **Large-Opening Screen Media:** Flame-Cut Plate, Bolt-Down Rubber, Grizzly Bars

### ASK ABOUT OUR LINERS AND ACCESSORIES

- **Magnetic, Plain, Plug-Weldable, and Bolt-On Liners:** Urethane, Rubber, Ceramic-Embedded
- **Accessories:** Side-Tension Rails, Tension Wedge Assembly, J-Bolts, U-Bolts, Donuts, Spray Pipe Seals, Profile Impact Pads, Stringers, Bucker Bar Covers, Skirt-Board Lining, etc. — Steel, Urethane, Rubber
- **Liners for Concrete Plants and Trucks:** Urethane, Urethane-Ceramic, Rubber-Ceramic

### DUREX PRODUCTS, INC.

112 West First Avenue, Luck, WI 54853  
 customerservice@durexproducts.com  
 715-472-2111  
[www.durexproducts.com](http://www.durexproducts.com)

